



PARKING MAP – ST KILDA TOWN HALL

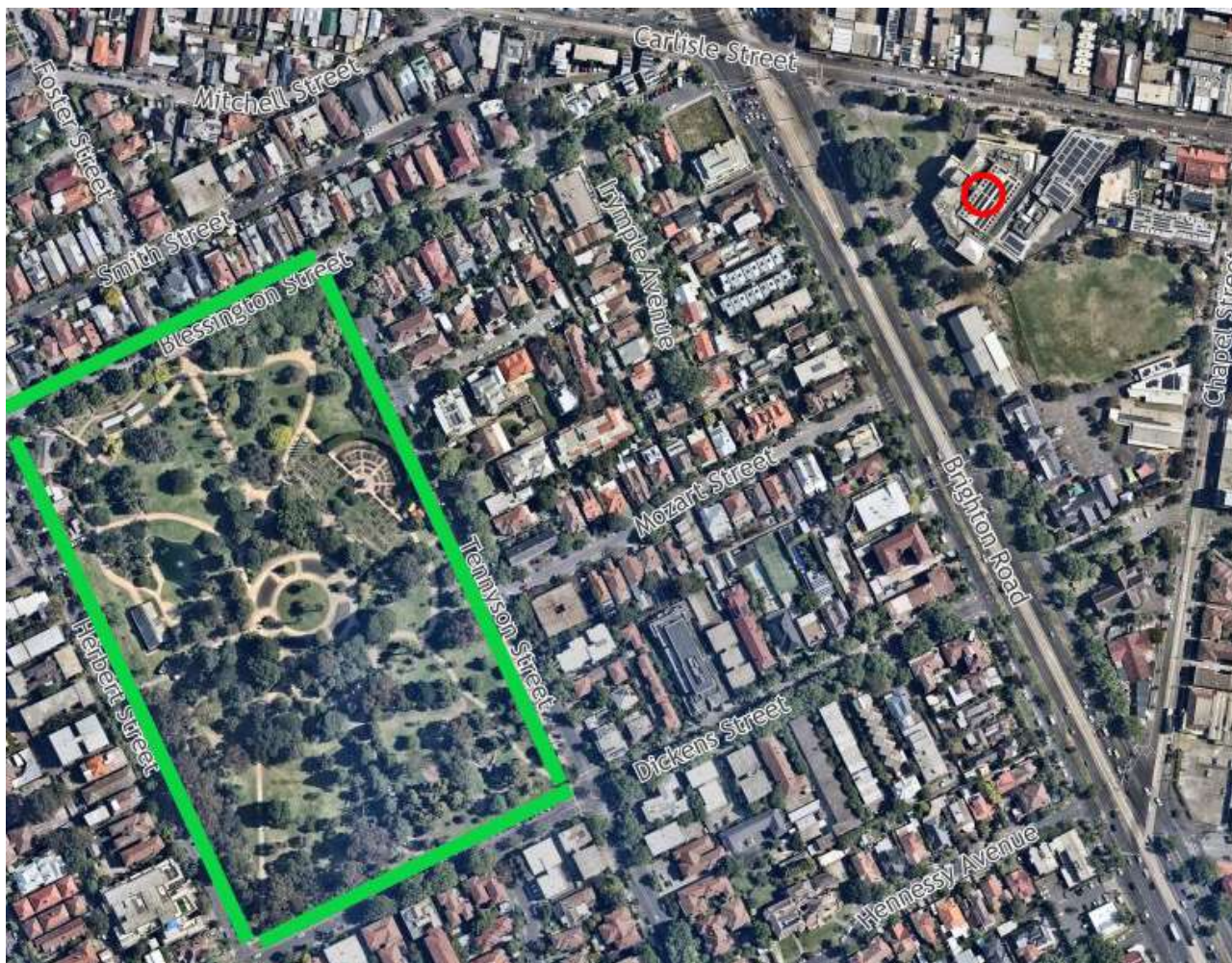
Please follow all parking restriction signs, this document is to be used as a guide only.

City of Port Phillip ASSIST

☎ 03 9209 6777 🌐 portphillip.vic.gov.au/contact-us

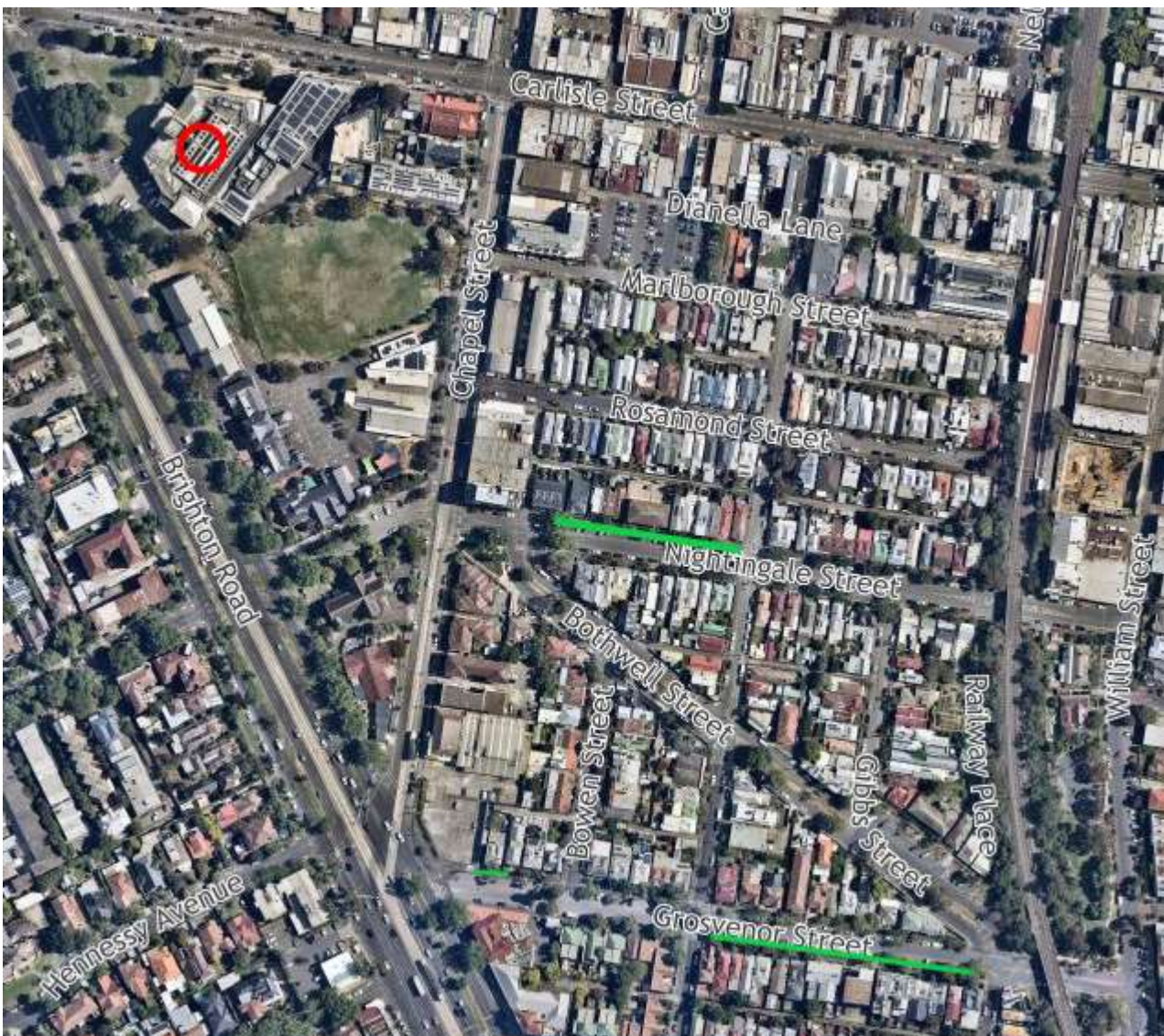


St Kilda Botanical Gardens has all day parking along Tennyson Street, Blessington Street, Herbert Street and Dickens Street. This is approximately a 600m walk to St Kilda Town Hall.



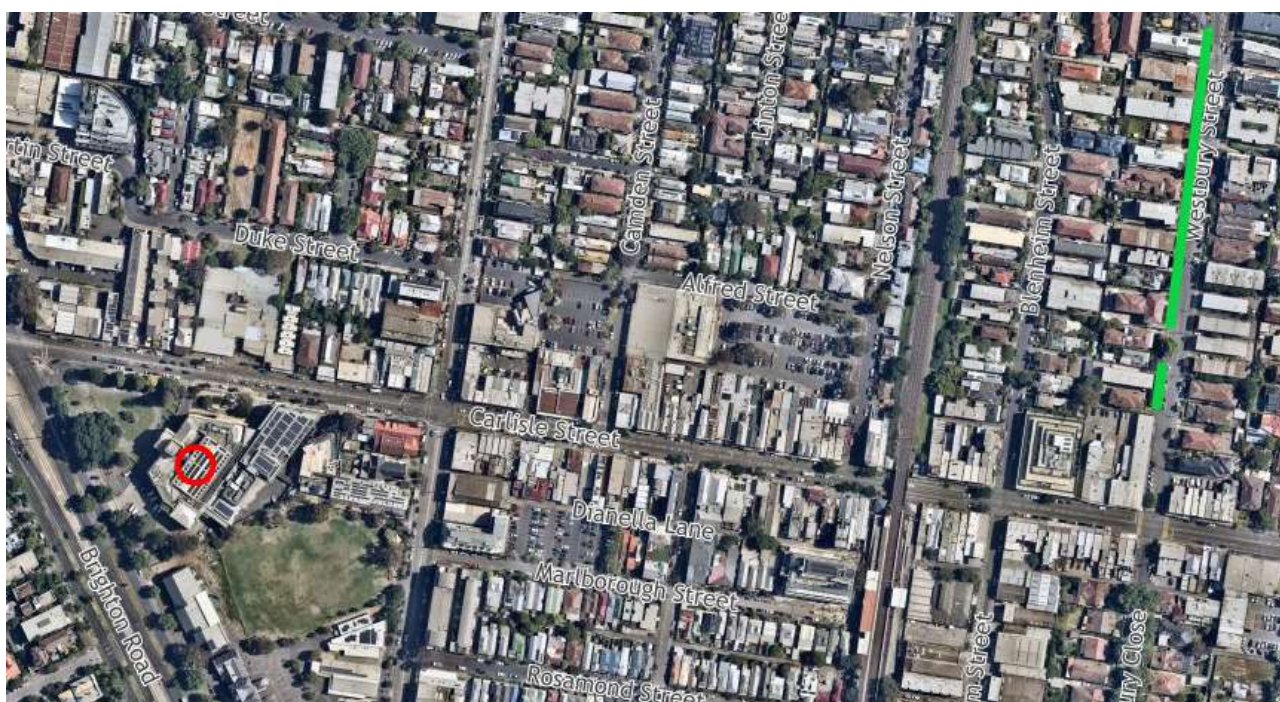
Nightingale Street, Grosvenor Street

There are some sections along Nightingale Street and Grosvenor Street which has All Day Parking, please adhere to the signs. Nightingale Street is approximately a 480m walk and Grosvenor Street is approximately a 700m walk.



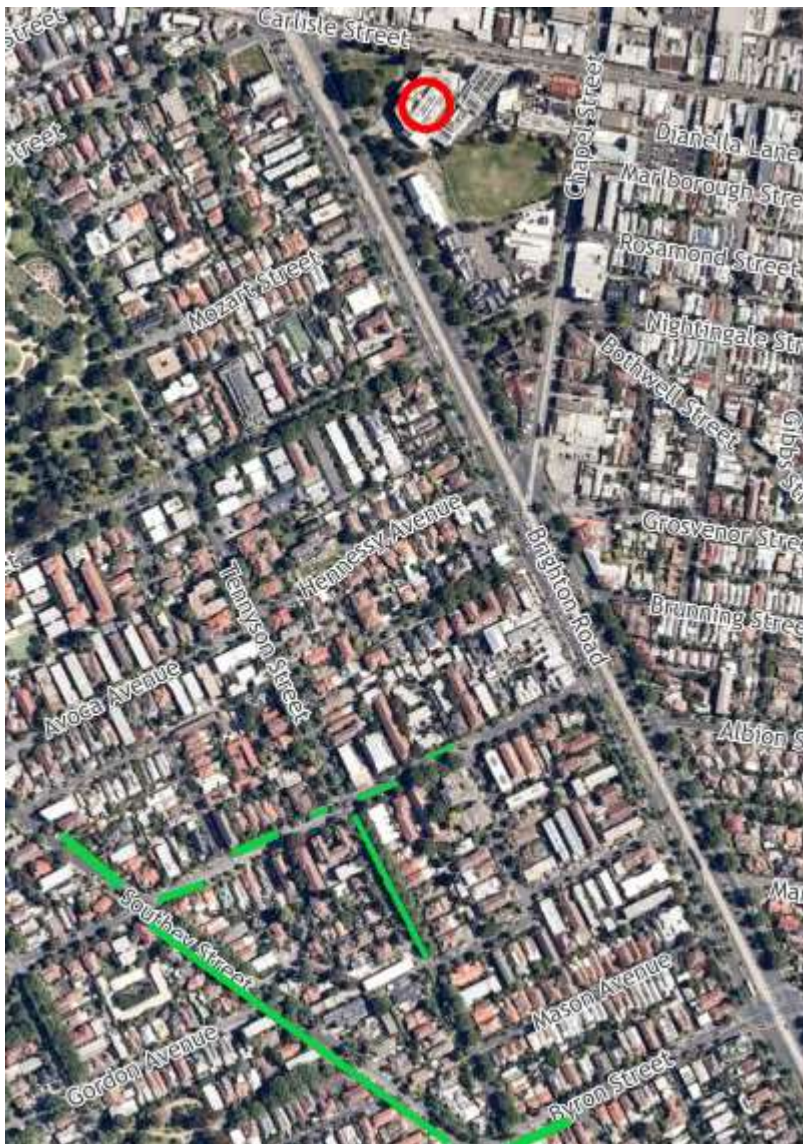
Westbury Street

Westbury Street is approximately an 800m walk to St Kilda Town Hall.



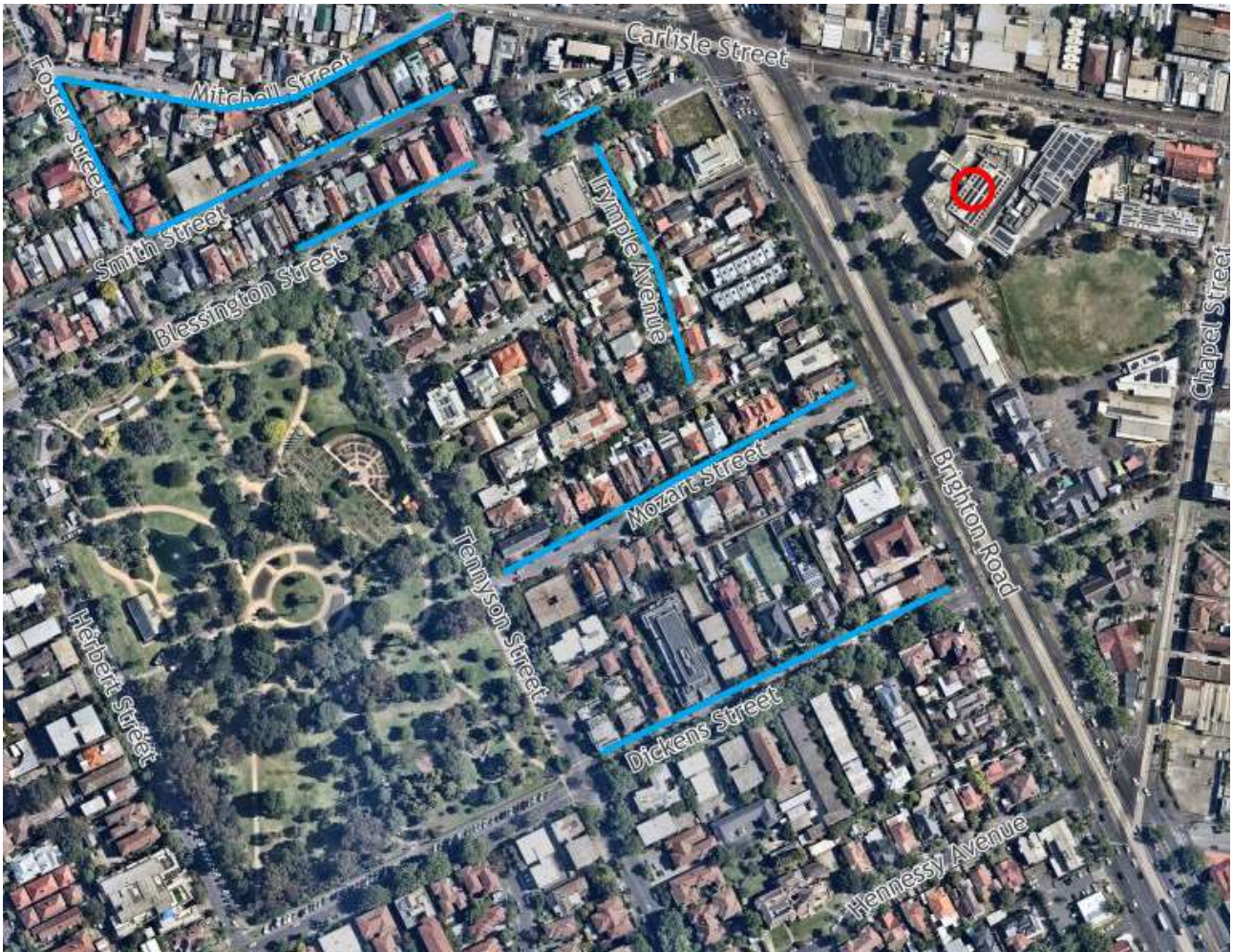
Byron Street, Southy Street, Tennyson Street, Milton Street

The above streets are approximately a 1km walk to St Kilda Town Hall.



2–4-hour Parking

This is a multitude of residential parking West of St Kilda Town Hall where there is 2-hour and 4-hour parking available – please note, some of these signs are 2-hour ONLY parking, regardless of time.



AFTER HOURS PARKING

Most of the parking along Carlisle Street is timed between 8am – 6pm, Monday – Friday, outside of these hours, you can park there for longer than 2-hours – please adhere to any CoPP signage.

PUBLIC TRANSPORT ST KILDA TOWN HALL

DISABLED PARKING

There is limited disabled parking bays near St Kilda Town Hall, 2 on-site with a 4-hour limit between 8am – 6pm, 1 along Carlisle Street on SKTH side which is a 2-hour limit between 9am – 5pm another adjacent with a 2-hour parking, 1 along Chapel Street in front of St Kilda Parish Mission Uniting Church with no time limit. 2 along Dickens Street in front of St Kilda Primary School which is also 4-hour parking (300m walk).



